

Aerial Lift Operator Commercial | Residential Tree Care

JOB DESCRIPTION

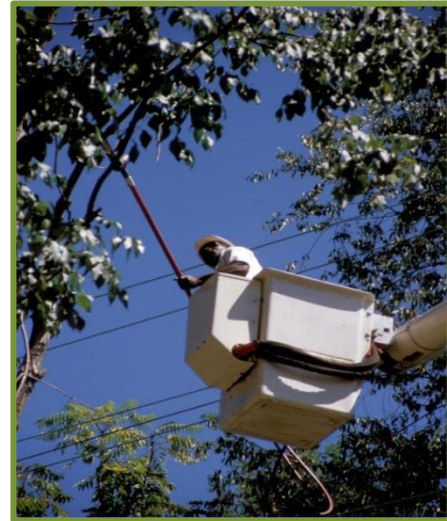
AERIAL LIFT OPERATORS have as primary duties pruning and removing trees. Occasionally, aerial lift operators will install tree support systems. An aerial lift operator must be proficient with a chain saw and tree removal equipment and techniques. In the commercial/residential tree care industry, aerial lift operators may work for private companies whose clients include parks, residences, government, etc.

TYPICAL BACKGROUND

Most aerial lift operators are former groundworkers and may also have climbing experience.

ELIGIBILITY REQUIREMENT

Commercial Driver's License (CDL) is required.



International Society of Arboriculture

EDUCATION/TRAINING NEEDS

- ✓ Advanced chain saw use
- ✓ Advanced felling techniques
- ✓ Aerial lift operation training
- ✓ Back injury prevention
- ✓ Basic knots and rope operation for rigging
- ✓ Basic tree biology
- ✓ Beginning diagnostic training
- ✓ Cabling and bracing
- ✓ Chipper use and safety
- ✓ Electrical hazards training
- ✓ Emergency procedures
- ✓ General work site safety
- ✓ Hazard recognition
- ✓ Job briefings
- ✓ Lightning protection
- ✓ Proper equipment use and maintenance
- ✓ Pruning principles and techniques
- ✓ Selection and use of PPE
- ✓ Tree identification
- ✓ Understanding work orders and plans
- ✓ Vehicle safety, safe operation, and driving

EDUCATION TRAINING MATERIALS

- ✓ *A Photographic Guide to the Evaluation of Hazard Trees in Urban Areas* (Matheny and Clark)
- ✓ *An Illustrated Guide to Pruning* (Gilman)
- ✓ *ANSI A300 Standards for Tree Care Operations* (or applicable national standards)
- ✓ *ANSI Z133 Safety Standard for Arboricultural Operations* (or applicable national standard)
- ✓ *Arborist Equipment: A Guide to the Tools and Equipment of Tree Maintenance and Removal* (Blair)
- ✓ *Arborists' Certification Study Guide* (ISA)
- ✓ *Arborists' Knots for Climbing and Rigging DVD and Workbook* (ISA)
- ✓ *ArborMaster® Training Video Series* (ISA)
- ✓ *Best Management Practice Series* (ISA)
- ✓ *Chain Saw Safety and Field Maintenance* (Eckert)
- ✓ Electrical Hazards Awareness Program
- ✓ *Manual of Woody Landscape Plants* (Dirr)
- ✓ *Tree Climbers' Guide* (ISA)
- ✓ *Tree Risk Assessment Manual* (ISA)

CERTIFICATION/LICENSES

ISA Certified Arborist®, ISA Certified Tree Worker Aerial Lift Specialist® and ISA Tree Risk Assessment Qualification credentials are recommended. CDL is required.

TYPICAL FUTURE CAREER PATHS

Commercial/residential aerial lift operators usually progress to positions of foreman or supervisor. Some workers may switch to other aspects of tree care such as municipal or utility operations.